

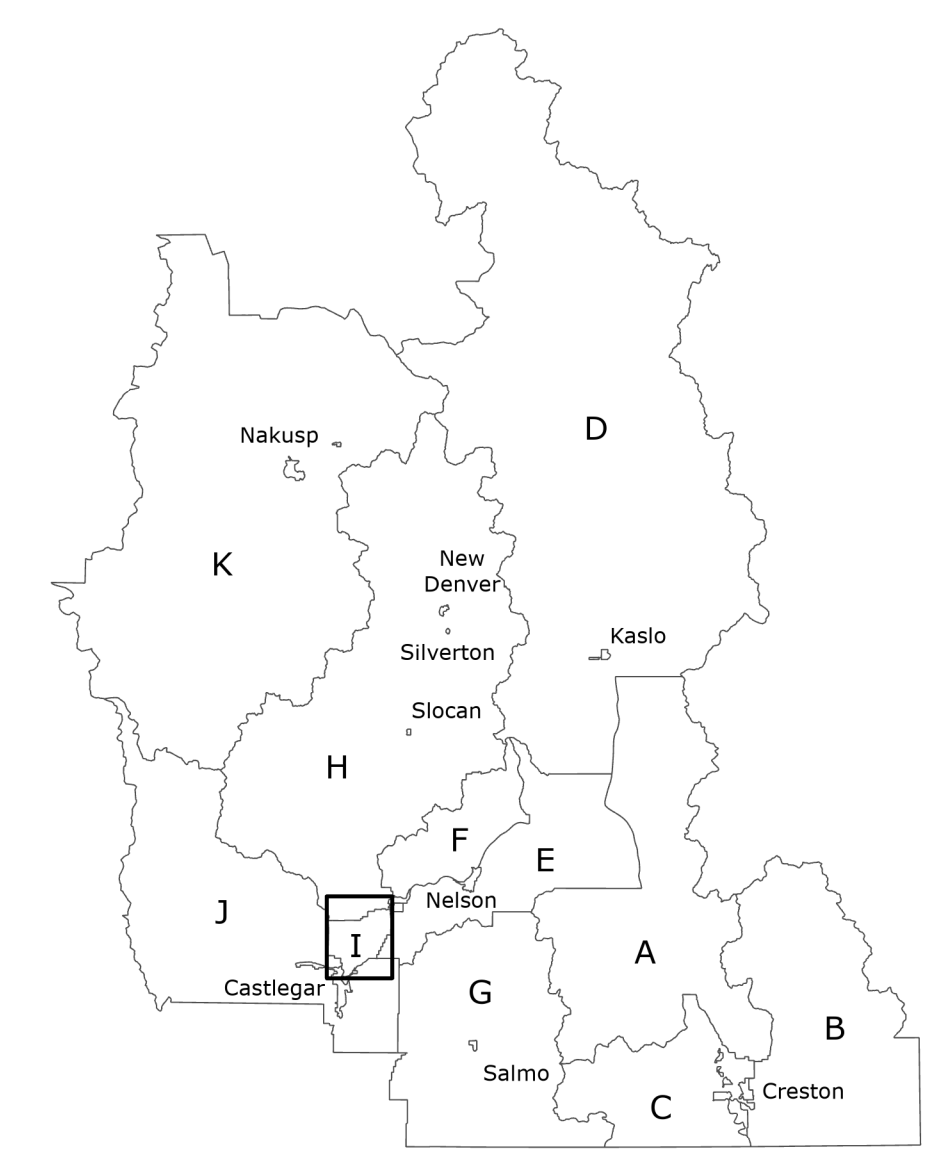
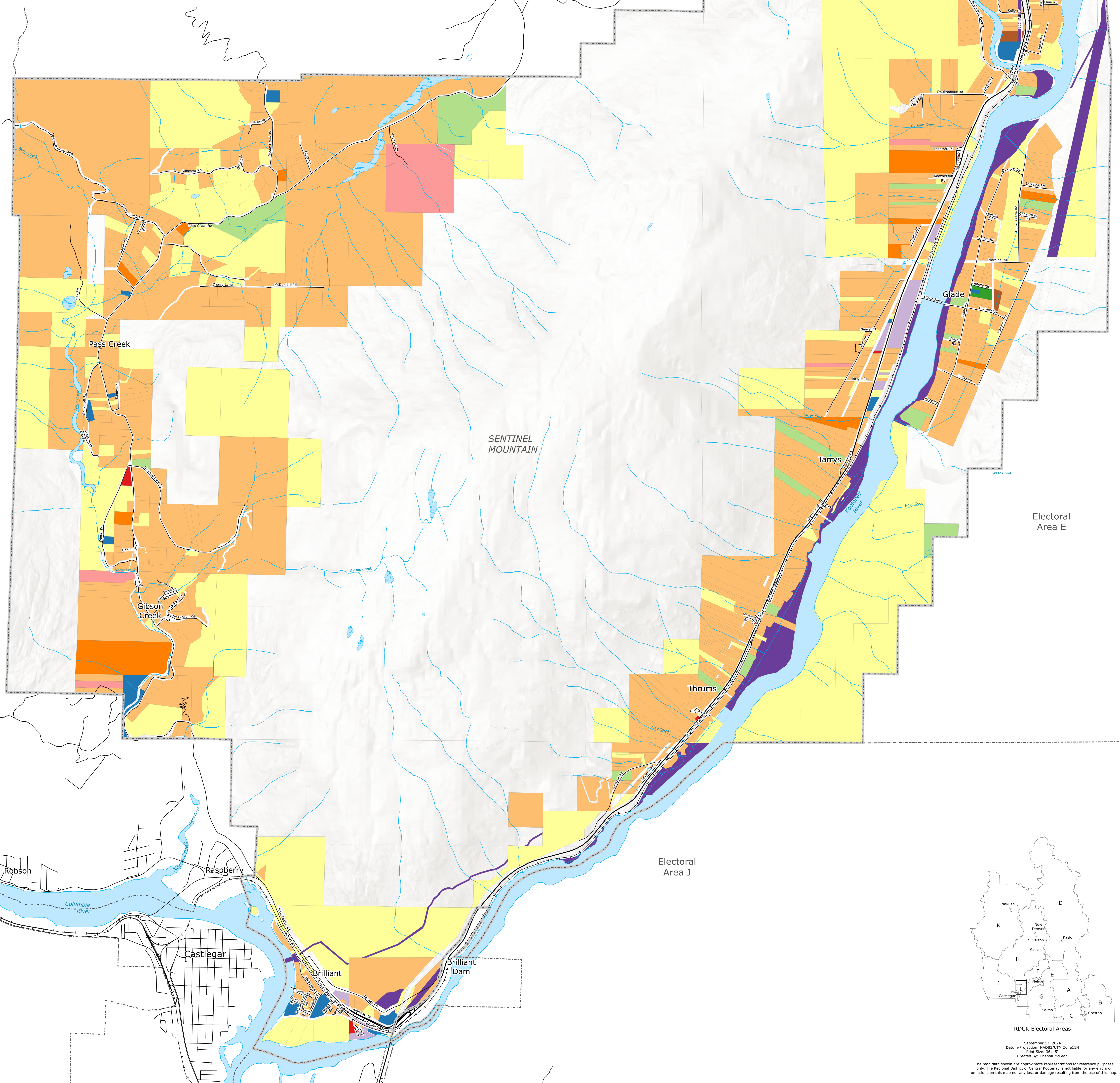
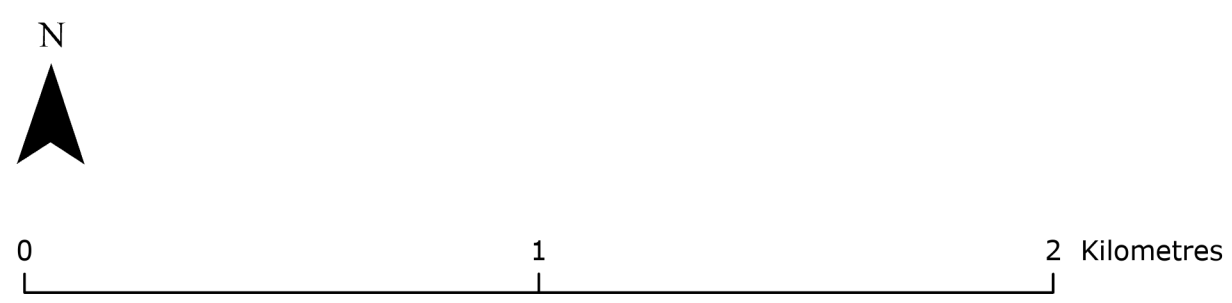


Existing Land Use

Schedule A.1 - Area I Official Community Plan
Bylaw No. 2821, 2024

- Electoral Area I
- Electoral Boundary
- Cadastre
- River or Lake
- Wetland
- Stream or Shoreline
- Highway
- Road
- Railway
- Sentinel Mountain - Crown Land

- Existing Land Use**
- Agriculture
 - Commercial
 - Community Services
 - Industrial
 - Mixed Use
 - Other
 - Parks Recreation
 - Residential
 - Sand & Gravel
 - Utility
 - Vacant



September 17, 2024
 Datum/Projection: NAD83/UTM Zone 11N
 Print Size: 36x48"
 Created by: Chelsea McLean

The map data shown are approximate representations for reference purposes only. The Regional District of Central Kootenay is not liable for any errors or omissions on this map nor any loss or damage resulting from the use of this map.